

# Lifetime Optimization

MetaLine Repair and Coating Systems



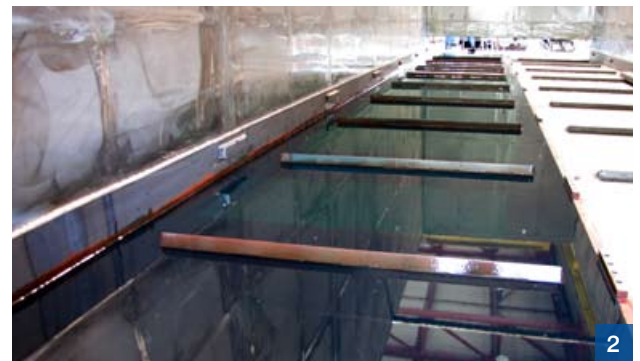
## Biogas systems

Seamlessly sprayable elastomeric coatings for lifetime extension - good chemical stability, non-stick properties, easy to clean. Repairable. Ultra-wear resistant

- Snap pumps
- Screw conveyors
- Trays
- Silos / Composting plants



1



2



3



4



5



6

- 1 *Spray-gummed conveyor screw for biomass*
- 2 *Absolutely seamlessly and level coated sliding floor module*
- 3 *MetaLine protective coatings instead of stainless steel parts*
- 4 *Coated snap pump – resistant to biocorrosion*
- 5 *Functional surface protection with low weight character*
- 6 *Elastomeric screw trough with increased resistance*