

# Surface Protection

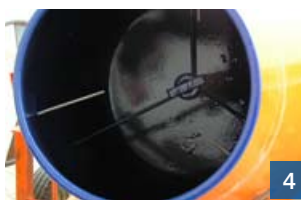
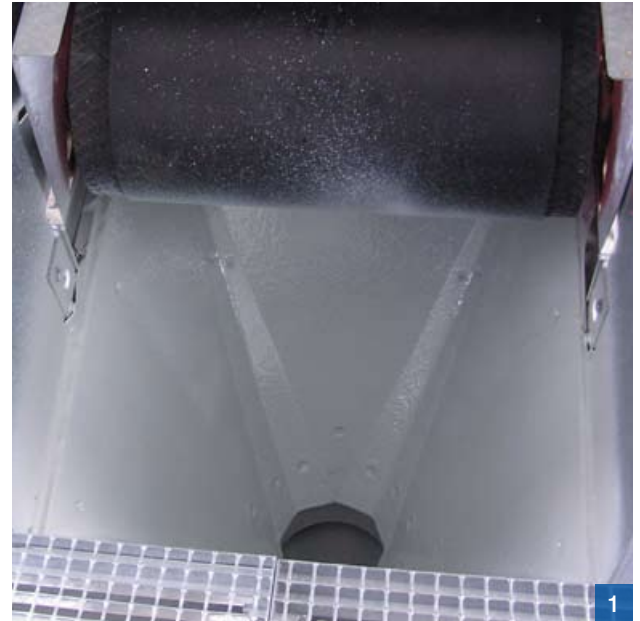
MetaLine Repair and Coating Systems



## Concrete processing

Sprayable elastomeric coatings for specific surface optimization when producing, storing and transporting concrete. Minimizes sticking, simplifies cleaning, reduces noise and is extremely impact and wear-resistant

- Concrete molds (release oil reduction)
- Transport troughs (cleaning reduction)
- Gutters / buckets
- Troughs / chutes
- Mixers (stationary / truck mixer)



- 1 *Elastomers offer optimum protection in impact situations*
- 2 *A typical area of application for MetaLine – seamless, soft and wear-resistant*
- 3 *Improves wear-resistance and cleaning, reduces noise*
- 4 *The mother of concrete processing – protected with MetaLine*
- 5 *Ensures complete sliding, helps to reduce cleaning time*
- 6 *MetaLine is at home in almost any wet mixing processes*