

Erosion Protection

MetaLine Repair and Coating Systems

Open impellers

Seamlessly sprayable elastomeric coatings for erosion protection. Resists high dynamic stresses. Extremely smooth surface. Optional with non-stick properties. Energy-saving and efficiency-increasing

- Impellers of mild steel
- Impellers of stainless steel
- Impellers of brass
- Impellers of PUR elastomers
- Impellers of rubber
- Impellers of plastic



- 1 *MetaLine – also works for the most demanding applications*
- 2 *Coated brass cooling water pumps for seagoing vessels*
- 3 *Life-time extension and cost reduction thanks to MetaLine*
- 4 *The MetaLine spraying technology is suitable for any designs*
- 5 *Elastomeric long-term wear protection on sewage treatment plant pumps*
- 6 *Repaired pump impeller made of solid rubber*

Wear Minimization

MetaLine Repair and Coating Systems



Closed impellers

Seamlessly sprayable elastomeric coatings for life-time optimization. Especially resistant against erosion and cavitation. Low area weight. Hydrodynamically optimized surface structure. Vibration-neutral

- Impellers of mild steel
- Impellers of stainless steel
- Impellers of brass
- Impellers of PUR elastomers
- Impellers of rubber
- Impellers of plastic



- 1 Reworked mining impeller (Warman) with a chromium content of 28%
- 2 MetaLine – unbeatable when it comes to smoothness and evenness
- 3 Where a brush won't fit anymore, MetaLine shows its true worth
- 4 Life-time extension by approximately 450% compared to grey cast iron
- 5 25 mm layer thickness on this suction dredger impeller
- 6 Up to 3.5% efficiency improvement compared to cast steel

Substance Preservation

MetaLine Repair and Coating Systems



Impellers (special forms)

Seamlessly sprayable elastomeric coatings for surface protection of dynamized components. Freely definable layer thicknesses and layer thickness geometries. FDA-compatible (conform to pharmaceutical and partly food grade specifications)

- Impellers of mild steel
- Impellers of stainless steel
- Impellers of brass
- Impellers of PUR elastomers
- Impellers of rubber
- Impellers of plastic



1



2



3



4



5



6

- 1 A 2 mm thick MetaLine liquid rubber coating - without seams/joints
- 2 Complicated structural shapes are in need of high-end coatings
- 3 MetaLine cartridge spraying technique – from professionals for professionals
- 4 Conveying, mixing, stirring, kneading – here MetaLine can show its true worth
- 5 Lime milk suspension pump coated with MetaLine 785
- 6 Coated for permanent use in saltwater

Cost Reduction

MetaLine Repair and Coating Systems

Spiral pump casing

Sprayable elastomeric coatings for substance preservation of machines under abrasive stress. Extreme wear resistance owing to rubber-like, seamless material properties. Efficiency improvement because of surface structures as smooth as glass

- Casings made of grey cast iron
- Casings made of stainless steel
- Casings made of duplex
- Casings made of special alloys



- 1 Coated pump casing from paper production
- 2 Large pump casing coated with 2 mm MetaLine 785
- 3 Cooling water pump made of special alloys with a 8 mm thick lining
- 4 Seamlessly elastomerified – MetaLine's strength
- 5 Elastomeric properties for extreme toughness
- 6 Coated Egger pump with 550 % life-time extension

Erosion Minimization

MetaLine Repair and Coating Systems



Split case pumps

Sprayable elastomeric coatings for reconstructing surfaces under erosive stress or for preventive protective coating. Cold and tension-free solidification. Impact and vibration resistant. In accordance with investigations carried out by pump manufacturers, better wear resistance than stainless steel (e.g. KSB Technik kompakt 10/2004)

- Spiral casings
- Split case pumps



- 1 *MetaLine spray coatings increase life-time*
- 2 *Applicable seamlessly – even in confined spaces where no brush fits*
- 3 *Up to 50 times more resistant than epoxy ceramic filler compounds*
- 4 *An ultra-lightweight and cost-effective OEM solution*
- 5 *Smoothly coated and flow-optimized surfaces*
- 6 *Precise, even, seamless – and above all rubber-like*

Chemical Protection

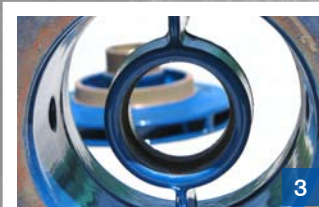
MetaLine Repair and Coating Systems



Submersible pumps

Sprayable elastomeric coatings or Novolac coatings to be applied by a brush to protect inner and outer surfaces of submerged equipment against chemical, mechanical, abrasive and corrosive attacks. Self-processable, durable and particularly economical

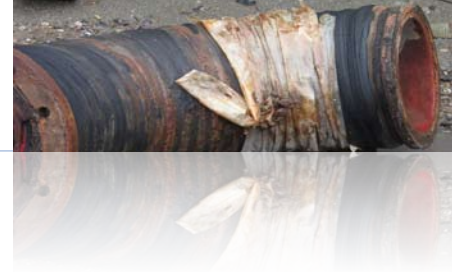
- Waste-water pumps
- Sewage treatment plant pumps
- Lifting pumps
- Bilge pumps
- Underwater pumps
- Submersible agitators
- Flow accelerators



- 1 Not only specially protected but also very decorative
- 2 Can be used on virtually any wetted parts
- 3 Efficiency improvement by perfect surface qualities
- 4 Completely coated and thus seamlessly „wrapped“ in rubber
- 5 Suitable for casings, impellers, wear plates and pipes
- 6 Flygt impeller protected elastomerically and life-time optimized

Part Regeneration

MetaLine Repair and Coating Systems



Pump semi-shells

Elastomeric repair and coating materials to be applied by spraying and by means of a trowel. Life-time equal or better than is achieved with the original part. Extreme ecological sustainability by avoiding waste production and protection of resources

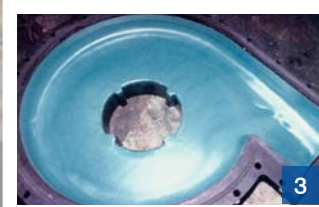
- Semi-shells made of rubber
- Semi-shells made of PUR elastomers
- Semi-shells made of cast steel



1



2



3



4



5



6

- 1 Simple when it comes to repair – durable regarding its function
- 2 Active environmental protection by multiple part regeneration
- 3 As cheap as a "no name replacement part" – as good as an original brand part
- 4 During assembly of a regenerated semi-shell
- 5 Metal semi-shell sprayed elastomerically in cold condition and in situ
- 6 Piece weight 18 kg, repair requirement 2 kg = cost reduction

Process Safety

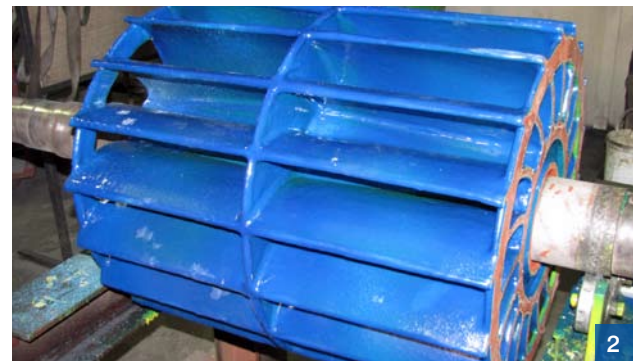
MetaLine Repair and Coating Systems



Vacuum pumps

Elastomeric repair and coating materials to be applied by brush, trowel or spraying. Corrosion-inhibiting, smooth with active borderline penetration protection. Resists solid matter impact and offers protection against structural loss

- Vacuum pump wheels
- Vacuum pump casings
- Vacuum pump plates



- 1 Whether partially or all over – MetaLine solutions work
- 2 Have you already seen a rubberized vacuum pump . . .
- 3 A typical damage scenario known to every pump operator
- 4 Restoring the contours of existing erosions with MetaLine ceramic repair compound
- 5 Coated all-over and thus protected intensively against corrosion
- 6 Not only suitable for rotors but also for casings / lids